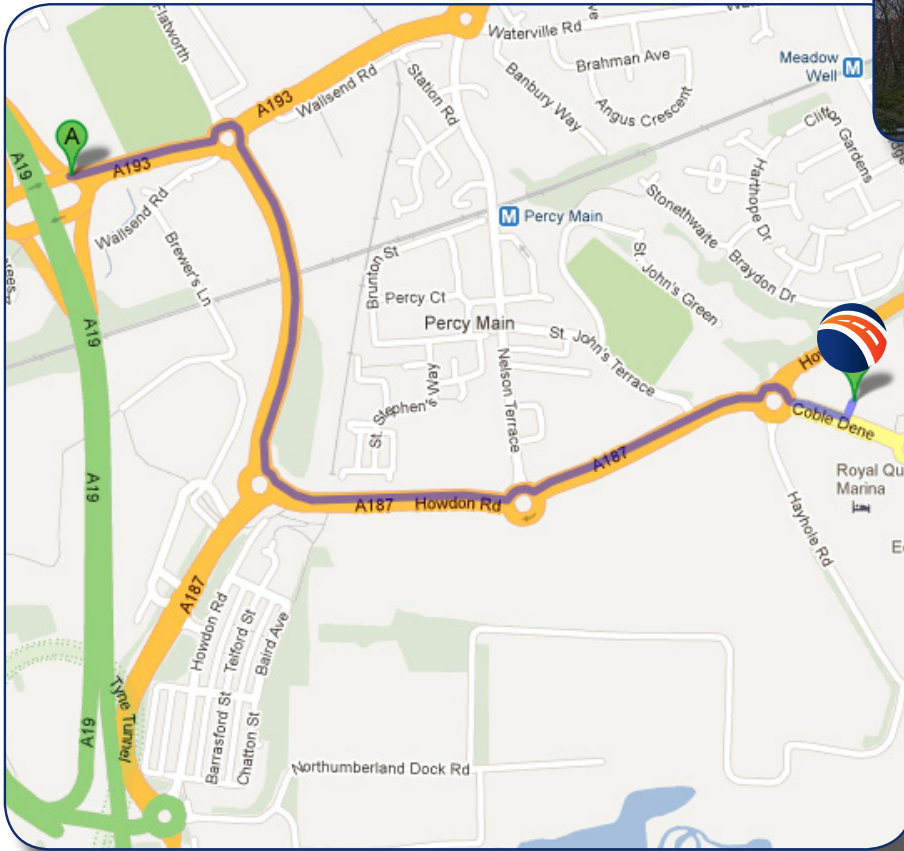




VLS HQ Directions:



By Car:

From the North & South:

From the A19, Exit on to the A193 and follow the signs to the Ferry Terminal/ Royal Quays shopping Centre.

VLS is located opposite Royal Quays shopping centre on Coble Dene. Visitor Parking is available at the front of the building with more extensive parking available at the rear of the building.

From the West:

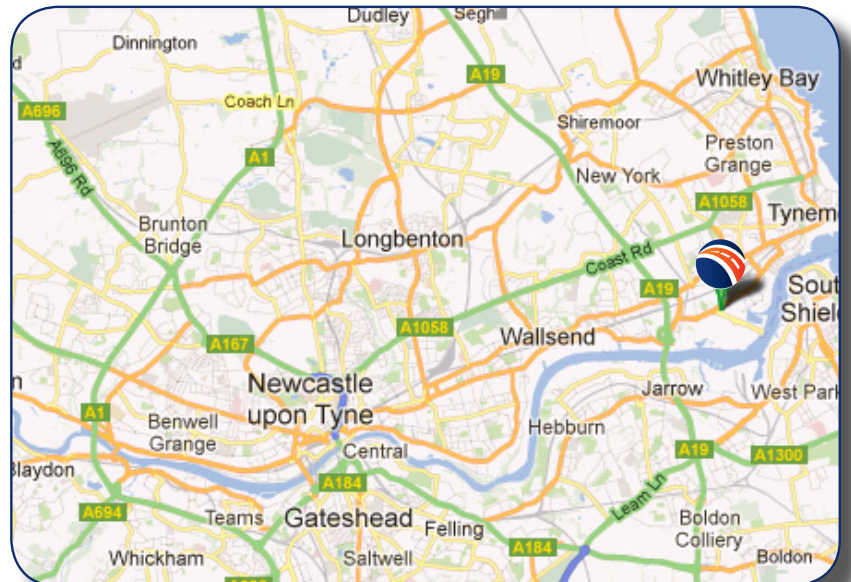
From the A167(M) central motorway exit onto the A1058 coast road Continue on the A1058 and exit onto the A19 southbound, heading towards the Tyne Tunnel. Continue with instructions as above.

By Rail:

Newcastle Central Station is the nearest railway station and is approximately a 20 minute journey by taxi. Alternatively take the Metro from Central Station to Monument then a second metro from Monument to Percy Main and the VLS office is a 5 minute walk.

By Air:

Newcastle International Airport is a 25 minute taxi ride to the office. Alternatively, take the Metro to Monument then a second metro from Monument to Percy Main and the VLS office is a 5 minute walk.



T: 0844 98 40 200
F: 0191 293 7100
E: customer.service@vls-ltd.com

Vehicle Lease and Service Ltd
The Centre for Advanced Industry, North Shields, Newcastle upon Tyne, NE29 6DE